

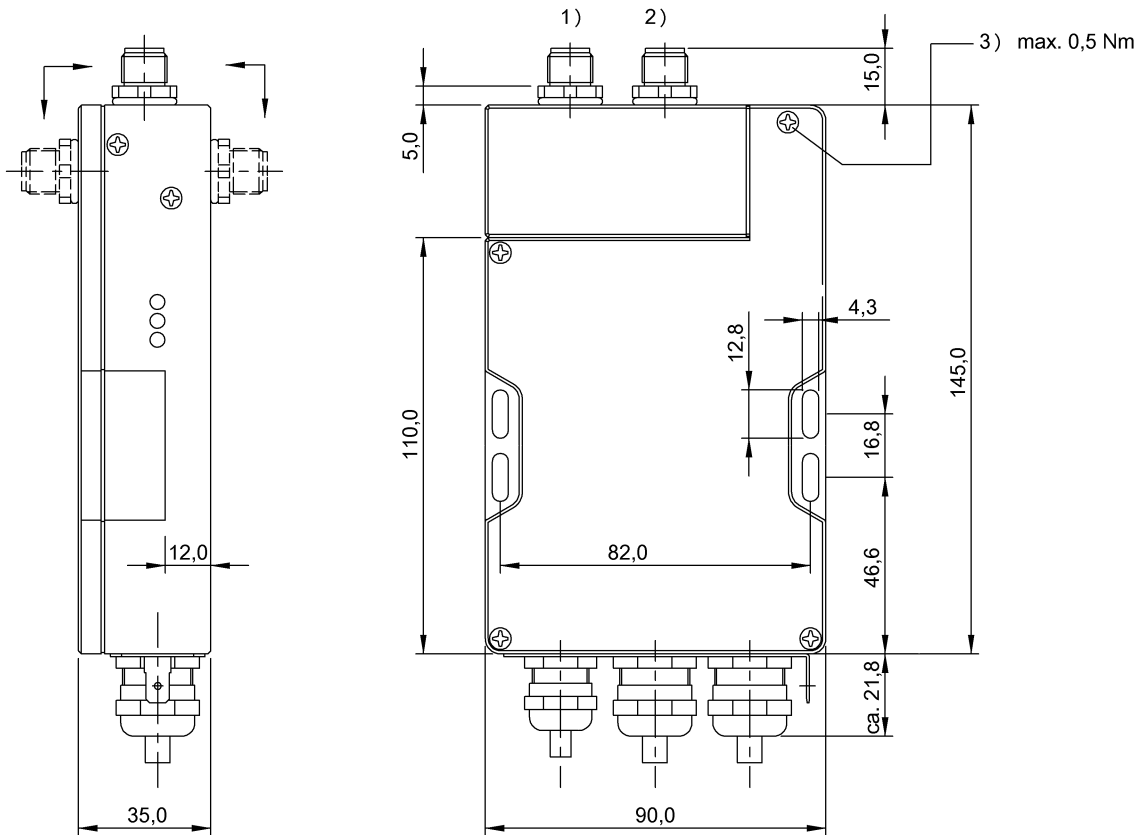
BIS C-6002-019-650-03-KL2
Ordering code: BIS0099

Processor
 35x90x145 mm
 BIS C

Profibus

BALLUFF

sensors worldwide



Characteristic data

Degree of protection as per IEC 60529 IP65 (with Write/Read head)

Electrical data

Connection	internal Vs 24V DC, input, outputs RS 232, Profibus DP: Terminal strip 19-pole Conductor sizes: 0.14 ... 1 mm ² with wire ferrules 0.25 ... 0.34 mm ²
Ripple	≤ 10 %
Current consumption (at 24 V DC)	≤ 400 mA
Output current max.	20 mA
Supply voltage Vs/Vs1	19.2...28.8 VDC
Supply voltage, output Vs	19.2...28.8 VDC
CT1 present / operating	LED green/yellow
CT2 present / operating	LED green/yellow
Input current at 24V	11 mA
Device interface	Profibus DP Slave Galvanically isolated
Ready / Bus active	LED red/green
Service interface internal	RS 232
Voltage drop at 20 mA	ca. 2.5 V
Control output	PNP, sourcing
Control input	1 (optocoupler isolated)

Control voltage active	4...40 V
Control voltage inactive	1.5...-40 V
Delay time typ	5 ms

Mechanical data

Size	35x90x145
Shock rating	EN 60068 Part 2-27
Vibration rating	EN 60068 Part 2-6
Ambient temperature	0...+60 °C
Ambient temperature Ta max.	+60 °C
Ambient temperature Ta min.	0 °C
Housing material	ABS
Continuous shock load	EN 60068 Part 2-29
Free fall	EN 60068 Part 2-32

Basic data

Remarks

Terminating resistor S2: open = passive, closed = active
 Values are under rated conditions unless otherwise specified.
 When installing, the technical standards and regulations of the corresponding countries must be observed.

Processor
 35x90x145 mm
 BIS C



Definitions see main catalog

subject to change

