

Pressure sensors for industrial applications Model P3297

Non linearity 0.5% (option 0.25%)

Standard output: 4...20 mA; 2-wire
 or 0...5 VDC; 3-wire
 or 0...10 VDC; 3-wire
 or 0.5...4.5 VDC; 3-wire
 or 0.5...4.5 VDC ratiometric



Description

Robustness and long-term stability during operation are the strengths of this compact pressure sensor for general industrial applications.

The materials and technologies used make these sensors suitable for applications with aggressive media. Welded connections between pressure cell and process connection require no sealing elements and make the measuring system particularly resistant to mechanical shock and vibration. The compact design makes these sensors interesting for room critical applications.

A wide variety of electrical connections and pressure ports simplifies the adaptation to different applications. The pressure sensor is internationally certified and ready for global deployment.

The pressure sensors comply with electromagnetic compatibility requirements (EMC) as per EN 61326.

Features

- Measuring range from 0...1 bar to 0...600 bar
- Medium wetted parts of stainless steel
- High EMC protection according to EN 61 326
- Compact instrument size
- No internal sealing elements
- Highly resistance to shock and vibration
- For dynamic or static measurements

Measuring range

Gauge pressure 0...1 bar to 0...600 bar
 -1...0 bar to -1...+24 bar

Applications

Hydraulics and pneumatics
 Pumps and compressors
 Building automation
 Test stand construction
 Machine and apparatus construction

Model: P3297

Technical Data

Model	P3297	
Pressure type	positive and negative gauge pressure absolut pressure on request	
- Measuring range [bar]	0...1 bar to 0...600 bar -1..0 bar to -1...+24 bar	
- overrange limit [bar]	x 2	
- burst pressure [bar]	x 6	
Sensor element	piezoresistive to 0..6 bar, thin film as of 0..10 bar	
Output signal	4...20 mA 2- wire 0...5 VDC 3- wire 1...5 VDC 3- wire 0...10 VDC 3- wire 0.5...4.5 VDC 3- wire 0.5...4.5 VDC ratiometric	
Non linearity ¹⁾	≤ 0.5% of F.S.; option: 0.25% of F.S.	
Accuracy ²⁾	≤ 1.0% of F.S.; option: 0.5% of F.S. ³⁾	
Zero Drift	≤ 0,5% of F.S. (typ.), ≤ 0,8% of F.S. (max.)	
Non-repeatability	≤ 0.1% of F.S.	
Long-term Drift	≤ 0.1% of F.S. (by reference conditions)	
Material not wetted parts medium wetted parts	stainless steel 316L, HNBR, PA stainless steel 316L (from 0...10 bar rel. 13-8PH)	
Pressure connection	G 1/4 according to DIN 3852-E G 1/4 according to EN 837 G 1/2 according to EN 837 1/4 NPT 1/2 NPT, other pressure connection on request	
Electrical connection	connector DIN EN 175301-803 Form A with junction box connector DIN EN 175301-803 Form C with junction box circular plug-in connector M12x1 (4-pin) cable outlet: 2m, other electrical connection on request	
Power supply / load 4...20 mA 0...1...5 V 0...10 V 0.5 ... 4.5 V 0.5 ... 4.5 V ratiometric	8...30 VDC 8...30 VDC 14...30 VDC 8...30 VDC 5 VDC ± 10%	$R_A [\Omega] \leq (U_B [V] - 8V) / 0.02A$ > max. output / 1 mA > max. output / 1 mA > max. output / 1 mA $R_A > 4.5k\Omega$
Reponse time	≤ 4ms within 10% to 90% of F.S.	
RoHS-conformity	yes	
Approval according to	cULus	
CE-conformance	2004/108/EWG interference emission and interference resistance to EN 61 326 interference emission limit class B 97/23/EG pressure gauge code	
Electrical protections	polarity, overvoltage and short-circuit protection	
Ingress protection (per IEC 60529) ⁴⁾	Plug DIN EN 175301-803: IP 65 Circular Connectors M12x1: IP 67 Cable output: IP 67	
Temperature influence	≤ 1% typ. ≤ 2.5% max.in range 0...80°C	
Temperature ranges compansated range storage media ambient	0...80°C -20...80°C (Option: -30..100°C) 0...80°C (Option: -30..100°C) 0...80°C (Option: -30..100°C)	
Load capacity shock (mechanical) vibration (under resonance)	500g acc. to IEC 60068-2-27 10g acc. to IEC 60068-2-6	
Weight	approx. 80g	

¹⁾ According to IEC 61298-2

²⁾ Including non linearity, hysteresis, non repeatability, variation of zero point and finale value (is equal to error according to IEC 61298-2).

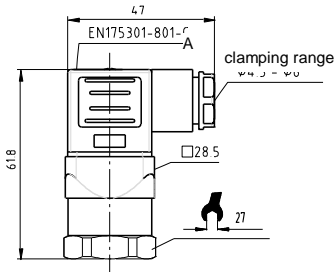
³⁾ By option: accuracy 0.5% and signal 0...5V is accuracy 0.6%

⁴⁾ The specified protection class (according to IEC 60529) only applies when plugged in using mating connectors with corresponding protection.

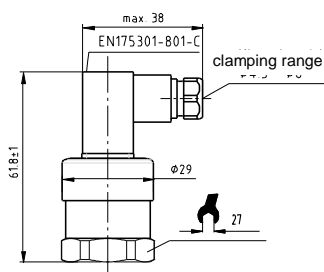
Dimension (mm)

Case

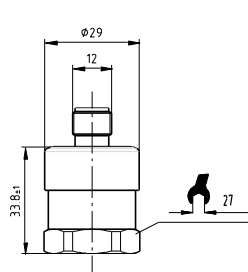
connector according to DIN EN 175301 – 803 Form A



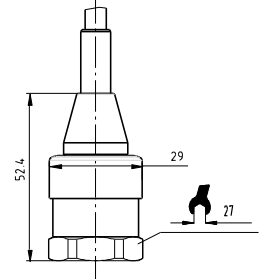
connector according to DIN EN 175301 – 803 Form C



circular plug-in connector M12x1

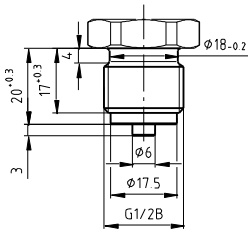


Cable outlet

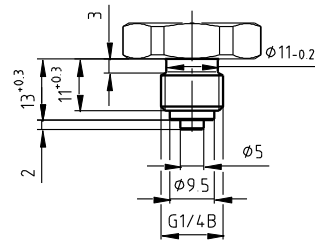


Pressure connections

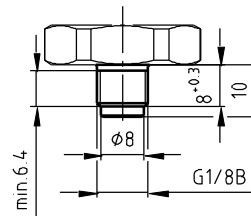
G 1/2 B



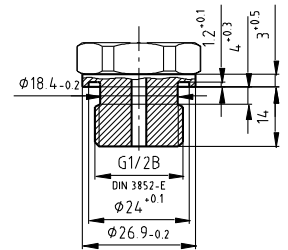
G 1/4 B



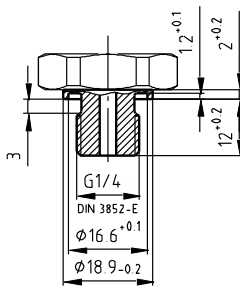
G 1/8 B



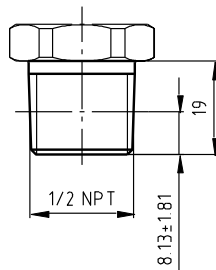
G 1/2 DIN 3852-E



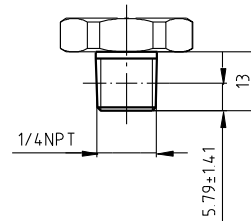
G 1/4 A DIN 3852-E



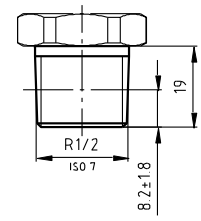
1/2 NPT



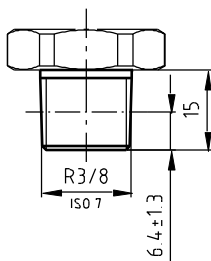
1/4 NPT



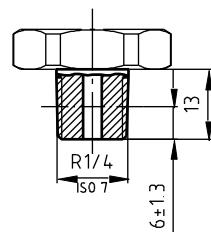
R 1/2



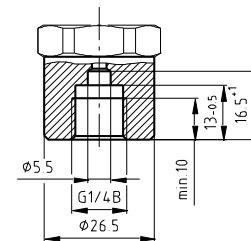
R 3/8



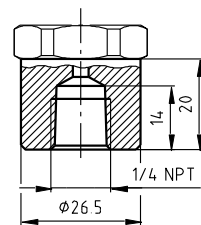
R 1/4



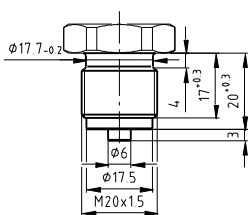
G 1/4 female



1/4 NPT female



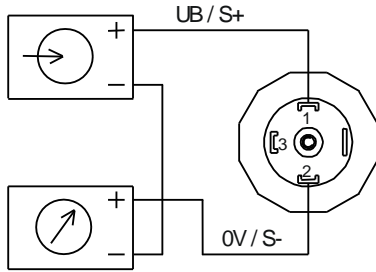
M20 x 1,5



Electrical connector

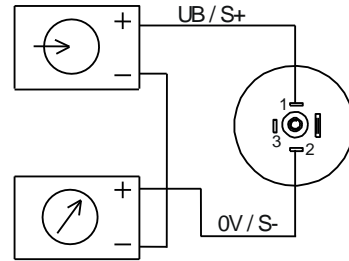
Two-wire system

Connector according to DIN EN 175301-803 Form A with junction box



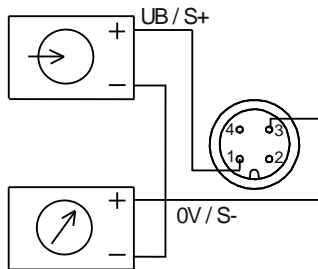
E-001

Connector according to DIN EN 175301-803 Form C with junction box



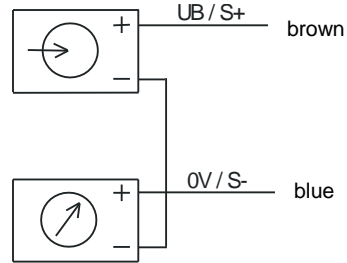
E-005

Circular plug-in connector M12x1



E-033

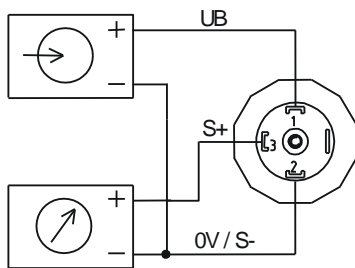
Cable outlet



E-015

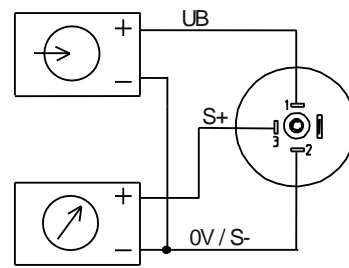
Three-wire system

Connector according to DIN EN 175301-803 Form A with junction box



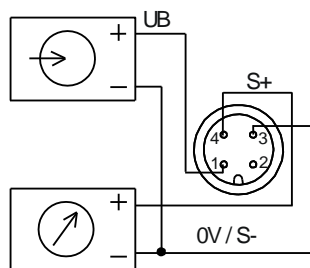
E-002

Connector according to DIN EN 175301-803 Form C with junction box



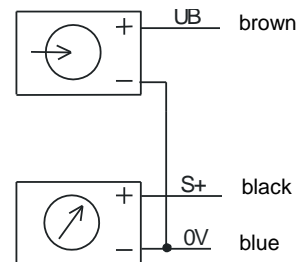
E-006

Circular plug-in connector M12x1



E-034

Cable outlet



E-017

Modifications reserved