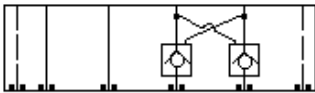
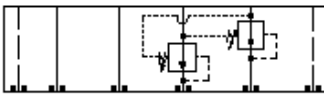


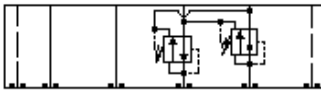
Counterbalance, On A and B, Cross-Piloted



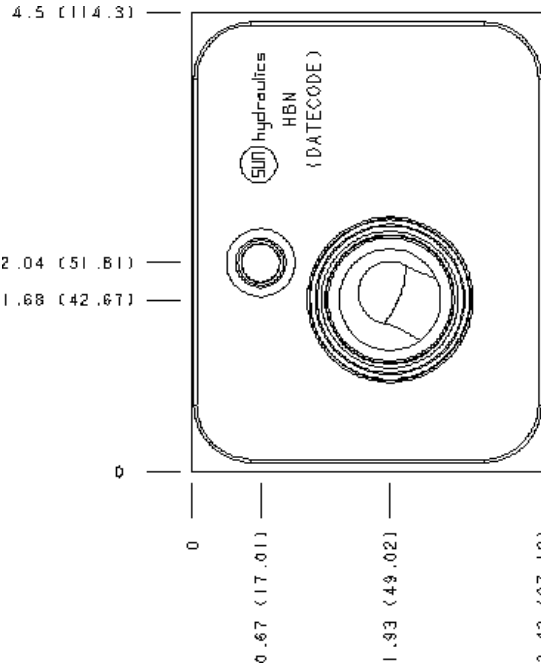
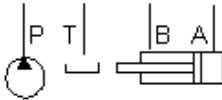
Pilot-To-Open Check, On A and B, Cross-Piloted



Reducing, On A and B, drain to opposite port



Reducing/Relieving, On A and B, Tanks and Drains to Opposite Port



Pilot-operated, balanced-piston relief cartridges are normally closed pressure regulating valves. When the pressure at the inlet (port 1) reaches the valve setting, the valve starts to open to tank (port 2), throttling flow to regulate the pressure. These valves are accurate, have low pressure rise vs. flow, they are smooth and quiet, and are moderately fast.

**TECHNICAL DATA**

Body Type	Sandwich
Interface	ISO 08
Body Features	On A and B with cross pilot
Stack Height	3.44 in.
Open Cavities	2
Cavity	T-17A
Model Weight	9.35 lb.

**NOTES** *Important:* Carefully consider the maximum system pressure. The pressure rating of the manifold is dependent on the manifold material, with the port type/size a secondary consideration. Manifolds constructed of aluminum are not rated for pressures higher than 3000 psi (210 bar), regardless of the port type/size specified.

**INCLUDED COMPONENTS**

Part	Description	Quantity
500-001-114	O-Ring	2
500-001-121	O-Ring	4
811-001-002	Locating Pin	1
A330-006-004	SAE Plug	2

**CONFIGURATION OPTIONS**

Model Code Example: HBN

**MODIFIER**

- 6061-T651 Aluminum, Buna-N**
- IS* 65-45-12 Ductile Iron, Buna-N, Blackened
- IV* 6061-T651 Aluminum, Viton
- IY* 65-45-12 Ductile Iron, Viton, Blackened

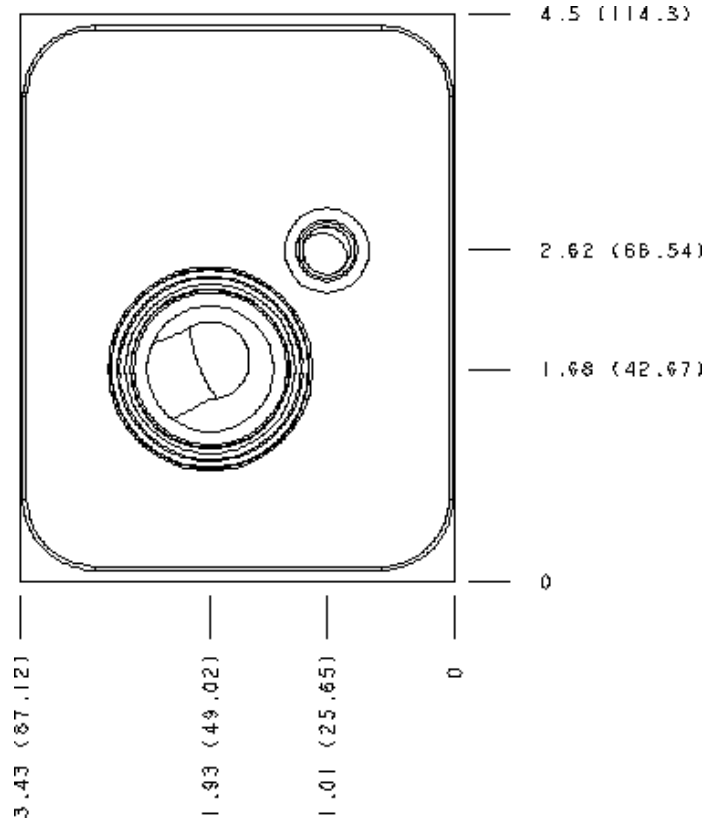
**MANIFOLD FACES**

**FACE GRID**

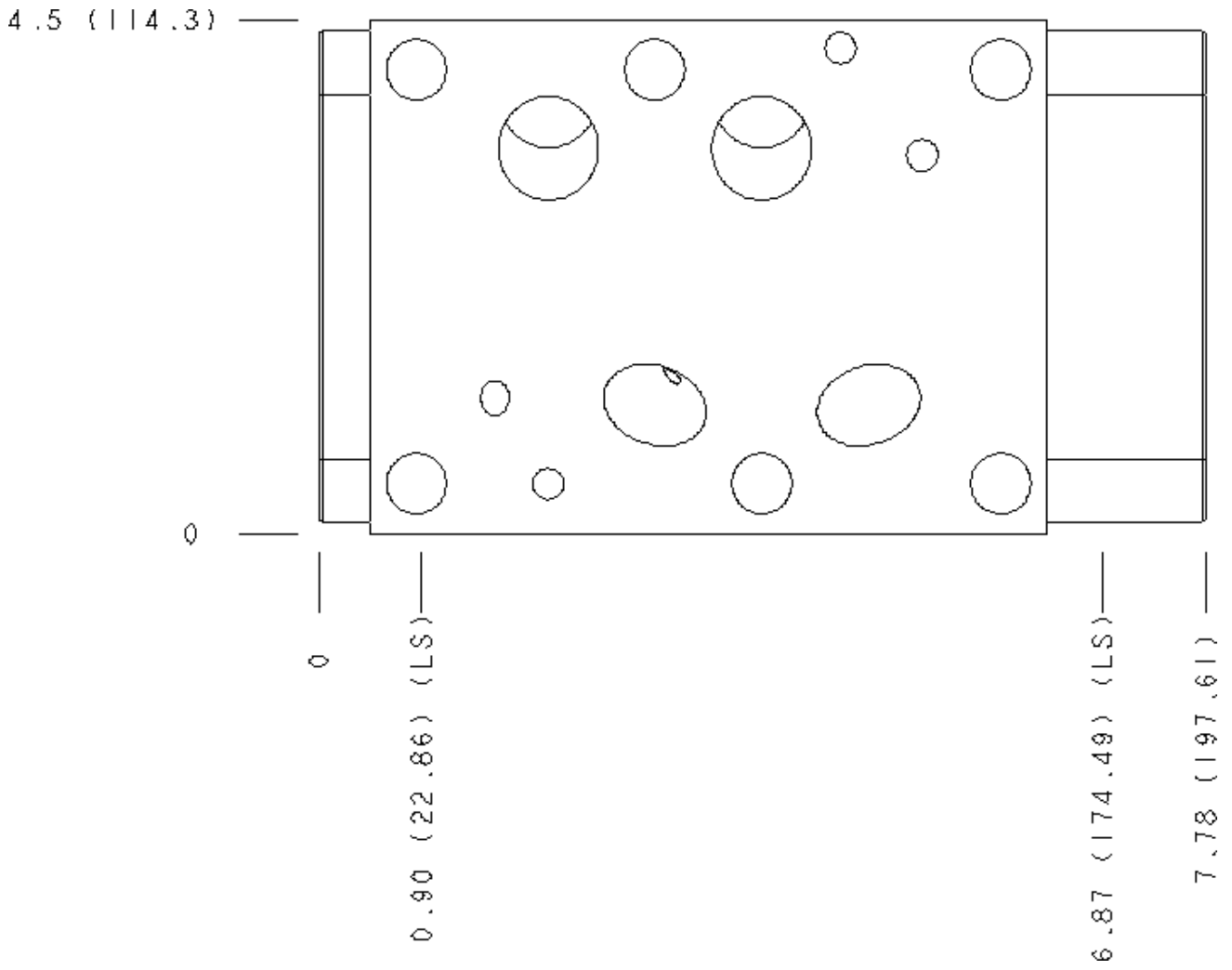
1	2	3	4
5	6	7	8
9	10	11	12



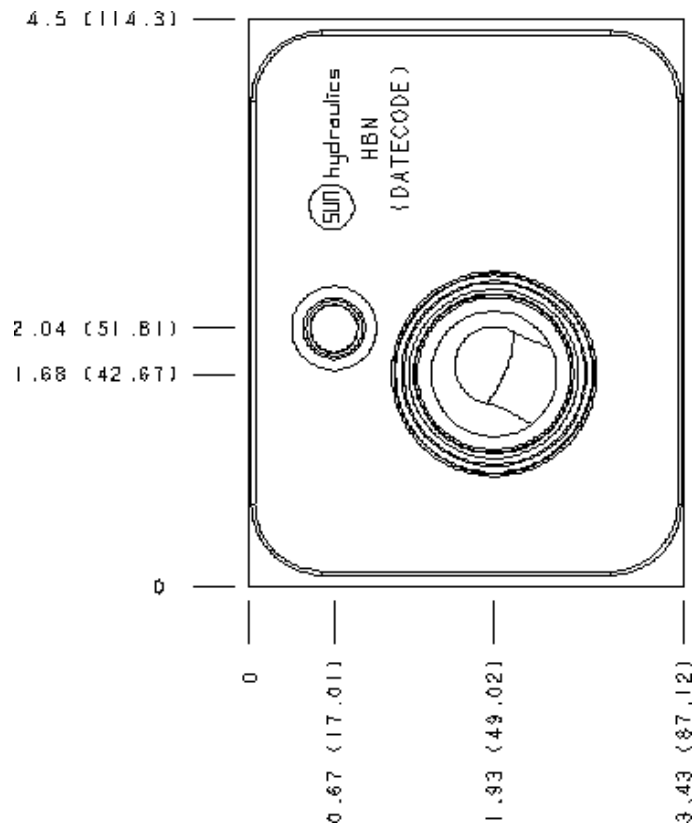
### Face 5



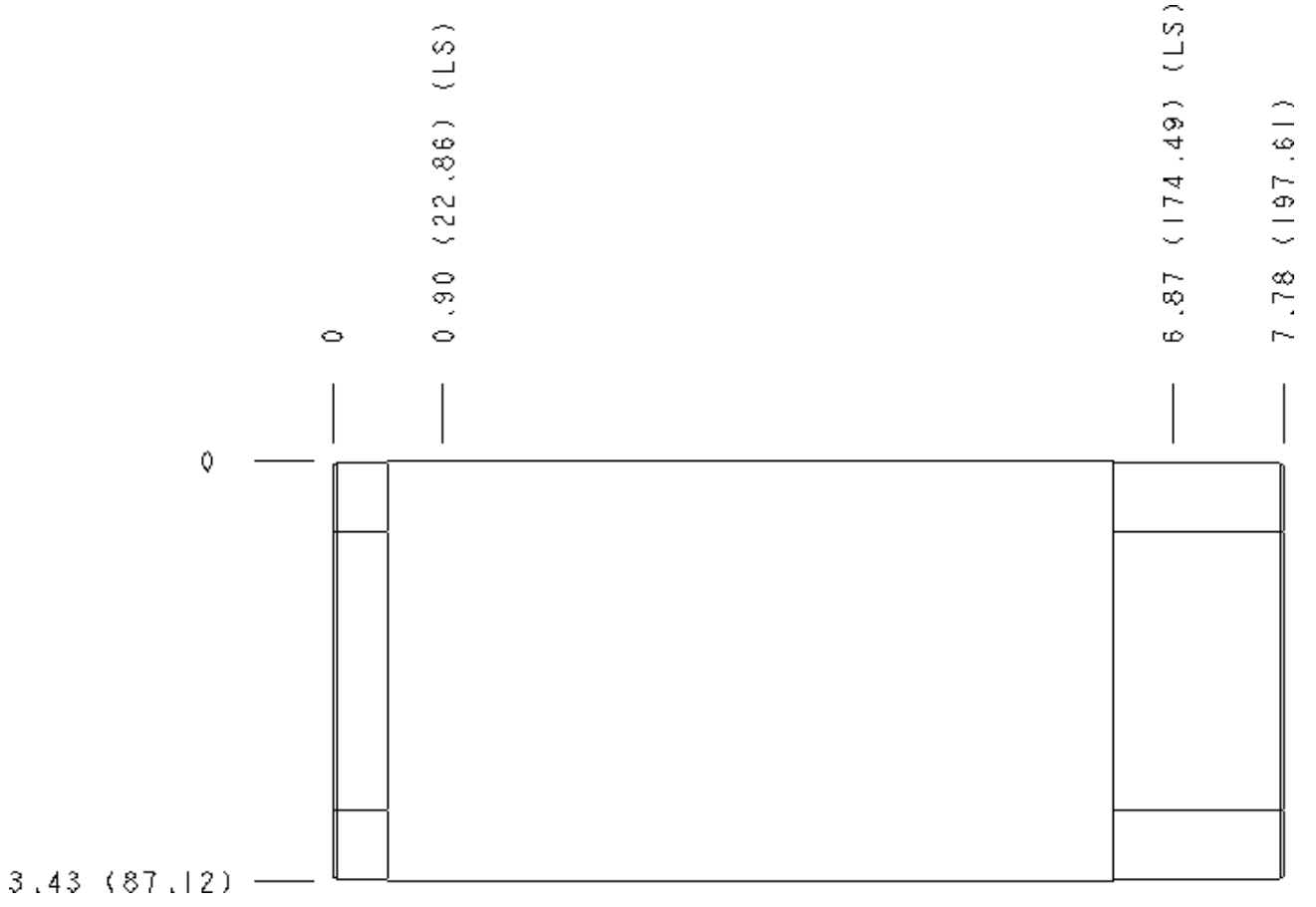
### Face 6



### Face 7



Face 10



Face 14

