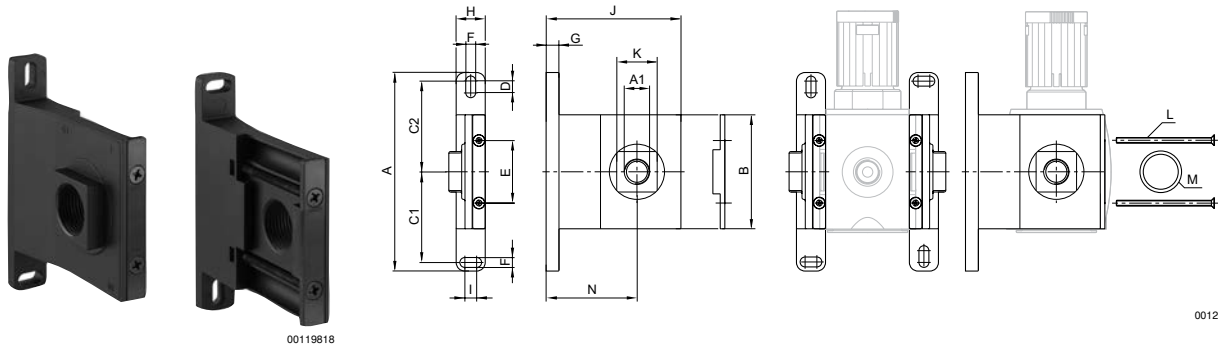


## Flow sensors, Series AF1 Accessories

### Block assembly kit, Series AS3-MBR-...-W05

▶ G 3/8 - G 1/2



00119818

00127749

Part No.	A1	A	B	C1	C2	D	E	F	G	H	I	J	K	L
<b>R412007366</b>	G 3/8	120	75	54	54	8	42	6.4	7	20	8	102.5	30	M5x68
<b>R412007367</b>	G 1/2	120	75	54	54	8	42	6.4	7	20	8	102.5	30	M5x68

Part No.	M	N	Material	Weight [kg]										
<b>R412007366</b>	23,1x1,78	72	Die cast zinc	0.825										
<b>R412007367</b>	23,1x1,78	72	Die cast zinc	0.825										

Scope of delivery incl. 4 mounting screws M5x68-4.8-A2R according to EN ISO 7046-1 (countersunk screw with type H X-slot), 2x O-ring