

CHARACTERISTICS

Ambient temperature	-5 ÷ +50 °C
Fluid	50 µm filtered air, with or without lubrication
Commutation system	spool
Pressure	1,5 ÷ 9 bar
Nominal bore (mm)	5
Nominal flow rate (NI/min)	770 (5/2) 700 (5/3) 670 (3/2+3/2)
Connections	G1/8
Valve body	zamak
Seals	NBR
Spool	aluminium
Electropilot/Coil	A series/U05 - B series/U04
Voltage	24 V DC - 12 V DC - 24 V AC - 110 V AC - 230 V AC (only for version with integrated electrical connection)
Power consumption	U05 = 2 W (DC) 2,3 VA (AC) U04 = 1,2 W (DC)
Manual override	recessed button - 1 position



CODIFICATION KEY

G	-	6	6	4	4	
1	2	3	4	5		

1 Series

G-6 = 20 mm - Valves and solenoid valves threaded body G1/8

2 Type

2 = 5/2 **6** = 3/2+3/2 NC-NC
3 = 5/3 c.c. **7** = 3/2+3/2 NC-NO
4 = 5/3 o.c. **8** = 3/2+3/2 NO-NO
5 = 5/3 p.c.

3 Control 14

3 = Pneumatic amplified
4 = Electrical amplified DC
5 = Electrical amplified DC/AC
6 = Electrical amplified DC - B series 10 mm electropilot

4 Return 12

0 = Pneumomechanical spring **4** = Electrical amplified DC
1 = Mechanical spring **5** = Electrical amplified DC/AC
3 = Pneumatic amplified **6** = Electrical amplified DC - B series 10 mm electropilot

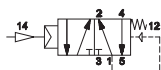
5 Option

D = External pilot supply

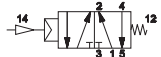
c.c. = closed centres o.c. = open centres p.c. = pressurized centres

Pneumatic impulse

Single impulse



G-6230

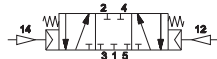


G-6231

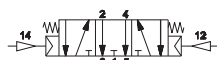
Double impulse



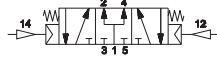
G-6233



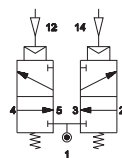
G-6333



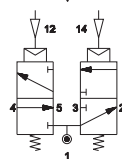
G-6433



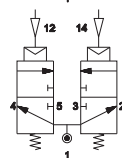
G-6533



G-6633



G-6733

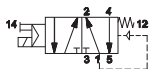


G-6833

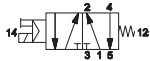
Solenoid valves are supplied without coil and connector

Electrical impulse - A series 15 mm Electropilot

■ Single impulse



G-6240 DC
G-6250 AC/DC



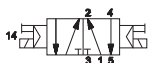
G-6241 DC
G-6251 AC/DC



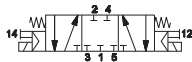
Coil with intergrated connector for multipolar version
DD-051-2C 24 V DC
DD-040-2C 24 V AC

Single/double impulse

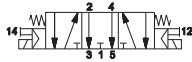
■ Double impulse



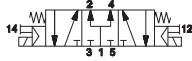
G-6244 DC
G-6255 AC/DC



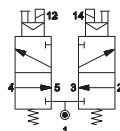
G-6344 DC
G-6355 AC/DC



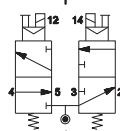
G-6444 DC
G-6455 AC/DC



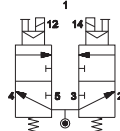
G-6544 DC
G-6555 AC/DC



G-6644 DC
G-6655 AC/DC



G-6744 DC
G-6755 AC/DC



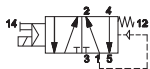
G-6844 DC
G-6855 AC/DC



DIN C (8 mm)
For further information please contact our Sales Office

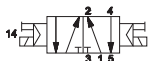
Electrical impulse - B series 10 mm Electropilot

■ Single impulse

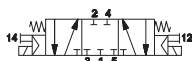


G-6260
G-6261

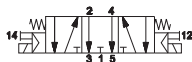
■ Double impulse



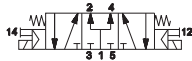
G-6266



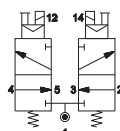
G-6366



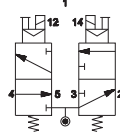
G-6466



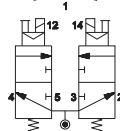
G-6566



G-6666



G-6766



G-6866

Solenoid valves are supplied without coil and connector

Electrical sub-base

■ Multipolar connection

■ External connection

■ Connector with loose cables

3



GP-6100

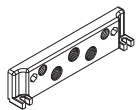
GP-6110

GP-611212

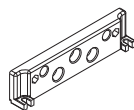
GP-611806

GP-6310/1/2

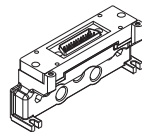
GP-6320/1/2



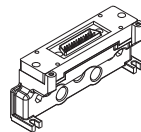
threaded end plate



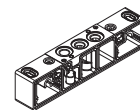
blank end plate



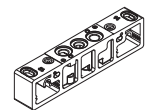
threaded end plate with male connector
25 poles
12+12 coils control 12-14



threaded end plate with male connector
25 poles
18 coils control 14
6 coils control 12



sub-base with open diaphragms
GP-6310 without electrical connection
GP-6311 monostable
GP-6312 bistable



sub-base with closed diaphragms
GP-6320 without electrical connection
GP-6321 monostable
GP-6322 bistable

GP-6330/1/2

GP-6340/1/2

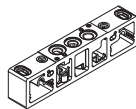
GP-6380

GP-6385

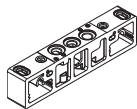
GP-6400-1

GP-6400-2

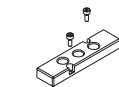
GP-6400-5



sub-base with closed air supply and open exhausts
GP-6330 without electrical connection
GP-6331 monostable
GP-6332 bistable



sub-base with open air supply and closed exhausts
GP-6340 without electrical connection
GP-6341 monostable
GP-6342 bistable



intermediate supply plate
(to be used only with GP-63... sub-base)



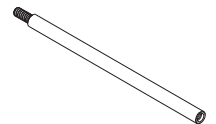
closing plate for unused valve place



modular tie-rod
1 valve place



modular tie-rod
2 valve places



modular tie-rod
5 valve places

AZ4-SN004A

No. 100 hexagonal nuts M4

AZ4-VN0416

No. 100 allen screws M4x16 for tie rods

GP-6512-01/..MF

GP-6514-01/..MF

GP-651418

DD-...

DD-051-2C/DD-040-2C

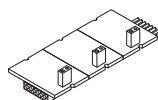
DE-6521



BUS connection card control side 12 with 12 pins
GP-6512-01MF 1 place
GP-6512-02MF 2 places
GP-6512-03MF 3 places
GP-6512-05MF 5 places
GP-6512-06MF 6 places



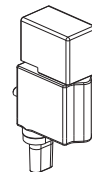
BUS connection card control side 14 with 12 pins
GP-6514-01MF 1 place
GP-6514-02MF 2 places
GP-6514-03MF 3 places
GP-6514-05MF 5 places
GP-6514-06MF 6 places



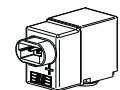
BUS connection card control side 14 with 18 pins (only 12 places) for manifolds with control 14 and more than 12 coils (up to 18) use GP-651418 card 12 places and then GP-6514-...



24 V DC 2 W coil for single connection



24 V DC 2 W coil with integrated connector for multipolar version

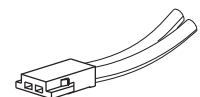


24 V DC 1,35 W coil with in-line connector with protection for a complete tightness

D-530-30/50/200

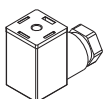
Customized solutions up to 12 places available upon request

Electrical connections



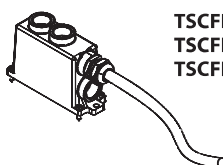
Miniature connector with loose cables

D-530-30 = wire length 300 mm
D-530-50 = wire length 500 mm
D-530-200 = wire length 2000 mm



AM-5109

15 mm connector



TSCFN24S0300
TSCFN24S0500
TSCFN24S1000

sub-D flying female connector in compliance with CEI 20-22 O.R. II prewired for 24 coils (3-5-10 length) M3x12 fixing screws