


REMOTE SENSOR SERIES

Description

- Operation mode and max sensing range:
Thru-beam: Dependent on amplifier (up to 70m)
Diffuse proximity: Dependent on amplifier (up to 5m)
- Optional sensor monitor LED
- Wide variety of housings
- High tolerance to hostile environments
- Cable or plug connections
- Available with optional  ATEX approval



The remote sensor series, which consists of a transmitter LT and receiver LR, is made to operate in conjunction with a Telco photoelectric amplifier from the PA, MPA or PAB programmes.

The remote sensors are available in a wide range of housings, with either cable or plug connection, and may be used in thru-beam or diffuse proximity mode.

The series is available with optional power-(LR) and output-(LT) monitor LEDs for use with any Telco photoelectric amplifier which has the sensor LED drive feature incorporated.

Technical Data

		LT	LR
Light source		Infrared, (880 nm)	-
Photo transistor		-	Silicon NPN
Housing material	Sensor housing	Refer to Available Types	
	Front lens	Polycarbonate	
Cable, PVC Ø 4,0 mm		2 x 0,25 mm ²	1 x 0,25 mm ² + shield
Min. cable bending radius		45 mm	

Environmental Data

Vibration		10-55 Hz, 0,5 mm
Shock		30 g
Light immunity, @ 20° incidence	101 Series	50 000 lux
	100 Series	80 000 lux
	110 / 120 Series	100 000 lux
Temperature, operation		-25 to +65 °C
Temperature, storage		-40 to +80 °C
Sealing class		IP 67
Approvals		CE

REMOTE SENSOR SERIES

Available Types

	Series	Optical Angle	Connection		5 m cable	15 m cable	3 pin, M8 plug	4 pin, M12 plug
			Housing Material	Housing Type				
Transmitter	101	+/- 10°	Polycarbonate	Ø10	LT 101 AP25 5	LT 101 AP25 15	LT 101 AP25 T3	-
				M12 x 1	LT 101 TP25 5	LT 101 TP25 15	LT 101 TP25 T3	-
			Nickel Plated Brass	M12 x 1	LT 101 TB25 5 ³	LT 101 TB25 15 ³	LT 101 TB25 T3	-
					Stainless Steel (AISI 316)	LT 101 TS25 5 ³	LT 101 TS25 15 ³	LT 101 TS25 T3
			Polyester	□ 9,5 x 11,5	LT 101 SG 5 ²	LT 101 SG 15 ²	LT 101 SG T3	-
			ABS	Ø12,7 Snap	LT 101 S22 5 ²	LT 101 S22 15 ²	-	-
Receiver	101	+/- 6°	Polycarbonate	Ø10	LR 101 AP25 5	LR 101 AP25 15	LR 101 AP25 T3	-
				M12 x 1	LR 101 TP25 5	LR 101 TP25 15	LR 101 TP25 T3	-
			Nickel Plated Brass	M12 x 1	LR 101 TB25 5 ³	LR 101 TB25 15 ³	LR 101 TB25 T3	-
					Stainless Steel (AISI 316)	LR 101 TS25 5 ³	LR 101 TS25 15 ³	LR 101 TS25 T3
			Polyester	□ 9,5 x 11,5	LR 101 SG 5 ²	LR 101 SG 15 ²	LR 101 SG T3	-
			ABS	Ø12,7 Snap	LR 101 S22 5 ²	LR 101 S22 15 ²	-	-

Transmitter	100	+/- 12° (High Power)	Polycarbonate	Ø10	LT 100H AP38 5	LT 100H AP38 15	LT 100H AP38 T3	-
				M12 x 1	LT 100H TP38 5	LT 100H TP38 15	LT 100H TP38 T3	-
			Nickel Plated Brass	M12 x 1	LT 100H TB38 5 ³	LT 100H TB38 15 ³	LT 100H TB38 T3	LT 100H TB58 J
					Stainless Steel (AISI 316)	LT 100H TS38 5 ³	LT 100H TS38 15 ³	LT 100H TS38 T3
			Polyester	□ 9,5 x 11,5	LT 100H SG 5 ²	LT 100H SG 15 ²	LT 100H SG T3	-
		Polycarbonate	Ø12,7 Snap	LT 100H S30 5 ²	LT 100H S30 15 ²	-	-	
		+/- 6°	Polycarbonate	Ø10	LT 100 AP38 5	LT 100 AP38 15	LT 100 AP38 T3	-
				M12 x 1	LT 100 TP38 5	LT 100 TP38 15	LT 100 TP38 T3	-
			Nickel Plated Brass	M12 x 1	LT 100 TB38 5 ³	LT 100 TB38 15 ³	LT 100 TB38 T3	LT 100 TB58 J
					Stainless Steel (AISI 316)	LT 100 TS38 5 ³	LT 100 TS38 15 ³	LT 100 TS38 T3
Polyester	□ 9,5 x 11,5		LT 100 SG 5 ²	LT 100 SG 15 ²	LT 100 SG T3	-		
Polycarbonate	Ø12,7 Snap	LT 100 S30 5 ²	LT 100 S30 15 ²	-	-			
Receiver	100	+/- 7°	Polycarbonate	Ø10	LR 100 AP38 5	LR 100 AP38 15	LR 100 AP38 T3	-
				M12 x 1	LR 100 TP38 5	LR 100 TP38 15	LR 100 TP38 T3	-
			Nickel Plated Brass	M12 x 1	LR 100 TB38 5 ³	LR 100 TB38 15 ³	LR 100 TB38 T3	LR 100 TB58 J
					Stainless Steel (AISI 316)	LR 100 TS38 5 ³	LR 100 TS38 15 ³	LR 100 TS38 T3
			Polyester	□ 9,5 x 11,5	LR 100 SG 5 ²	LR 100 SG 15 ²	LR 100 SG T3	-
Polycarbonate	Ø12,7 Snap	LR 100 S30 5 ²	LR 100 S30 15 ²	-	-			

Transmitter	110	+/- 5°	Polycarbonate	Ø10	LT 110 AP38 5	LT 110 AP38 15	LT 110 AP38 T3	-
				M12 x 1	LT 110 TP38 5	LT 110 TP38 15	LT 110 TP38 T3	-
			Nickel Plated Brass	M12 x 1	LT 110 TB38 5 ³	LT 110 TB38 15 ³	LT 110 TB38 T3	LT 110 TB58 J
Receiver	110	+/- 3°	Polycarbonate	Ø10	LR 110 AP38 5	LR 110 AP38 15	LR 110 AP38 T3	-
				M12 x 1	LR 110 TP38 5	LR 110 TP38 15	LR 110 TP38 T3	-
			Nickel Plated Brass	M12 x 1	LR 110 TB38 5 ³	LR 110 TB38 15 ³	LR 110 TB38 T3	LR 110 TB58 J
Stainless Steel (AISI 316)	M12 x 1	LR 110 TS38 5 ³	LR 110 TS38 15 ³	LR 110 TS38 T3	LR 110 TS58 J			

Transmitter	120	+/- 4°	Nickel Plated Brass	M18 x 1	LT 120 TB45 5 ³	LT 120 TB45 15 ³	-	LT 120 TB45 J
Receiver		+/- 2,5°			LR 120 TB45 5 ³	LR 120 TB45 15 ³	-	LR 120 TB45 J

Note: 1. Photo amplifiers to be ordered separately.

2. Remote sensors are available with optional power (LR) and output (LT) monitor LEDs for use with the applicable Telco photoelectric amplifier, which has the sensor LED drive. Add 'L' after the series number for sensor monitor LED e.g. LT/LR 101L AP 25 5. Sensors marked ² are not available with this optional feature.

3. Remote Sensor series with metal housing and cable connection is available to comply with ATEX  II 3 G Ex nA IIC T6 Gc and II 3D Ex tc IIIC T100 °C Dc. Add "/EX" after the series number e.g. LT/LR 100/EX TS38 5. Sensors marked ³ are available to comply with ATEX approval.

REMOTE SENSOR SERIES

Applicable Photoelectric Amplifiers and Maximum Ranges

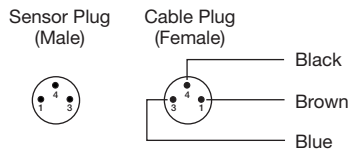
Remote Sensor Series	101		100		110		120		
	Thru-beam	Diffuse Proximity	Thru-beam	Diffuse Proximity	Thru-beam	Diffuse Proximity	Thru-beam	Diffuse Proximity	
Photoelectric Amplifier Series									
PA 01	8 m	0,6 m	10 m	0,7 m	23 m	1,6 m	45 m	3,5 m	
PA 10	A	11 m	0,9 m	-	-	-	-	-	
	B	-	-	15 m	1,1 m	35 m	2,0 m	60 m	4,0 m
PA 11	-	-	18 m	1,3 m	40 m	2,7 m	70 m	5,0 m	
PA 15	-	-	18 m	1,3 m	40 m	2,7 m	70 m	5,0 m	
Multiplexed Amplifier Series									
MPA 21	-	-	10 m	0,7 m	25 m	1,6 m	45 m	3,5 m	
MPA 41	A/B	-	-	8 m	0,6 m	18 m	1,3 m	35 m	2,0 m
	C/D	-	-	4 m	0,4 m	9 m	0,7 m	18 m	1,3 m
MPA 81	A/B	-	-	8 m	0,6 m	18 m	1,3 m	35 m	2,0 m
	C/D	-	-	4 m	0,4 m	9 m	0,7 m	18 m	1,3 m
Photoelectric Amplifier Bus Series									
PAB 10	-	-	18 m	1,3 m	40 m	2,7 m	70 m	5,0 m	
PAB 20	-	-	12 m	0,8 m	27 m	1,7 m	47 m	3,6 m	
PAB 30	-	-	12 m	0,8 m	27 m	1,7 m	47 m	3,6 m	

Note: 1. Sensing range of LT 100H high power used in conjunction with the LR 100 increases range by 25% in 100 series sensing ranges.
 2. Sensing ranges using glass fibre optics, please refer to page 169.

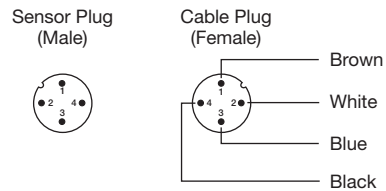
Connections

	Cable	M8 Plug / Cable	M12 Plug / Cable
Transmitter Signal	Red	Pin 1 / Brown	Pin 1 / Brown
Transmitter Ground	Black	Pin 3 / Blue	Pin 3 / Blue
Receiver Signal	Yellow	Pin 4 / Black	Pin 4 / Black
Receiver Ground	Shield	Pin 3 / Blue	Pin 3 / Blue

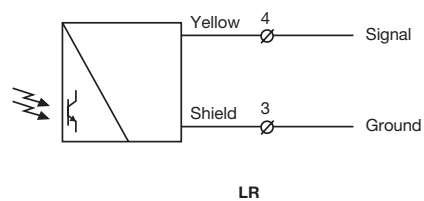
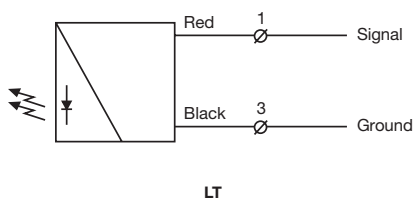
3 pin, M8



4 pin, M12

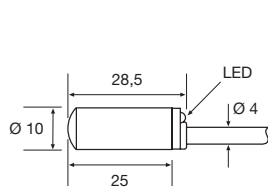


Wiring Diagrams

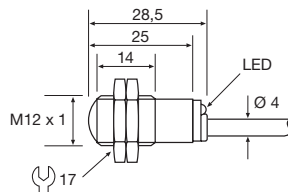


Dimensions and Descriptions

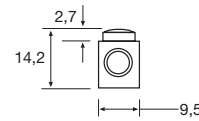
Series 101



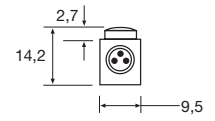
AP25 5/15



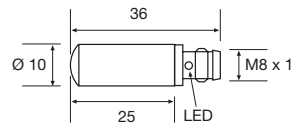
TP/TB/TS25 5/15



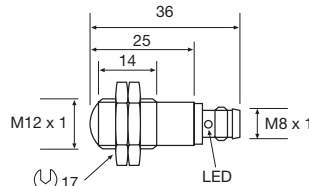
SG 5/15



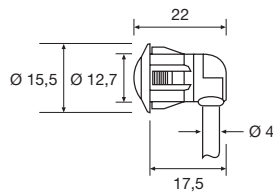
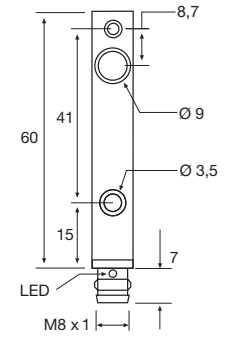
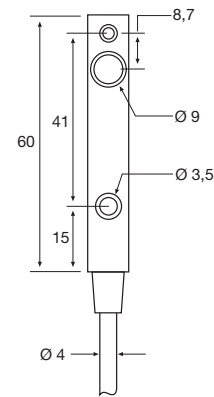
SG T3



AP25 T3

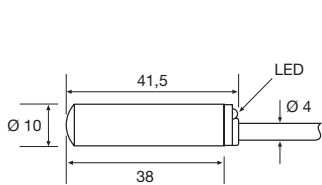


TP/TB/TS25 T3

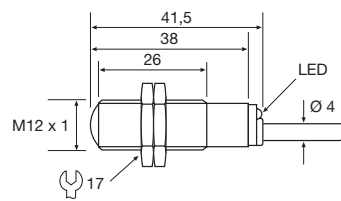


S22 5/15

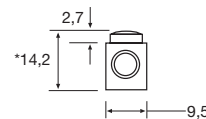
Series 100



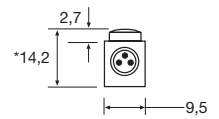
AP38 5/15



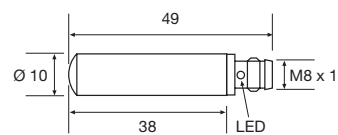
TP/TB/TS38 5/15



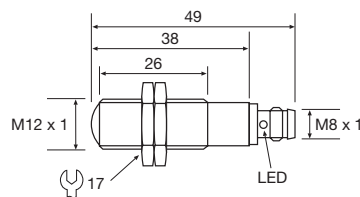
SG 5/15



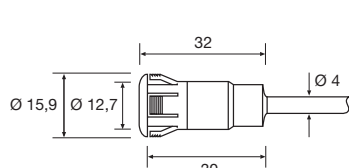
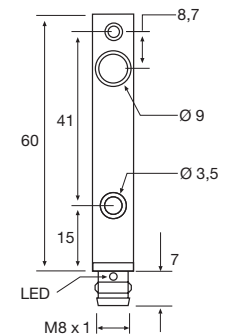
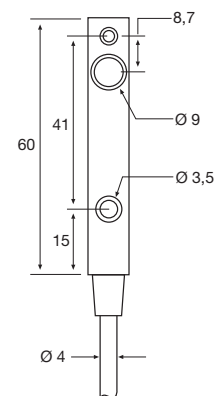
SG T3



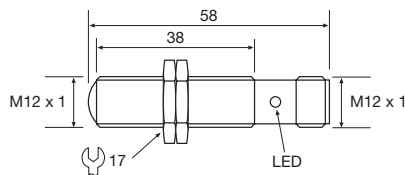
AP38 T3



TP/TB/TS38 T3



S30 5/15



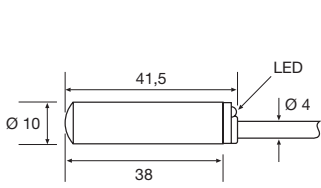
TB/TS58 J

* LT 100H: 16

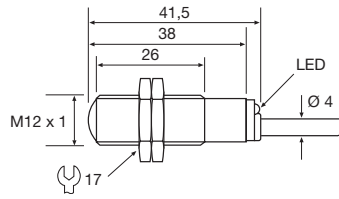
(Units in mm)

REMOTE SENSOR SERIES

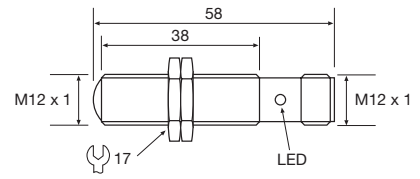
Series 110



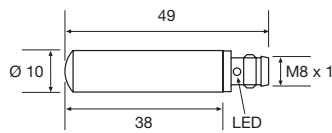
AP38 5/15



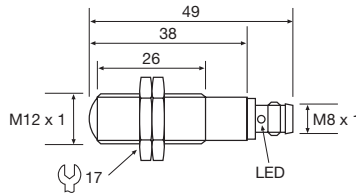
TP/TB/TS38 5/15



TB/TS58 J

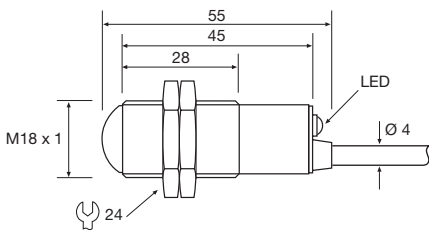


AP38 T3

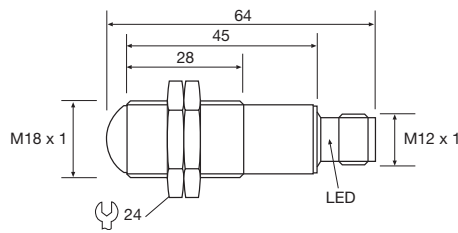


TP/TB/TS38 T3

Series 120



TB45 5/15

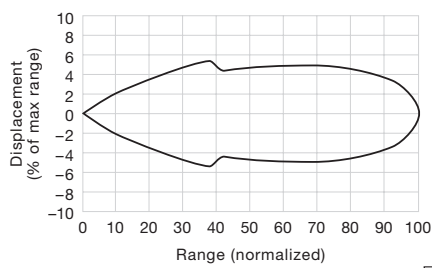


TB45 J

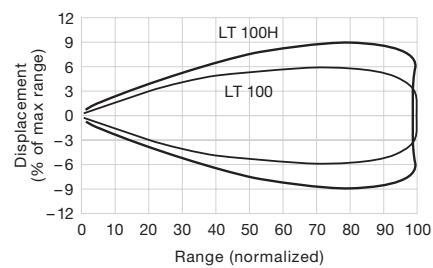
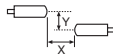
(Units in mm)

Sensing Characteristics

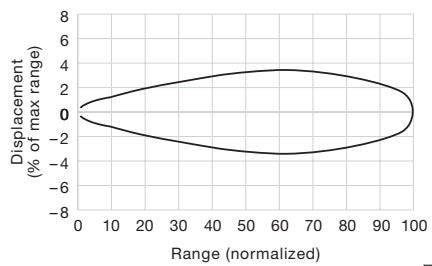
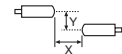
Parallel Displacement (Thru-beam)



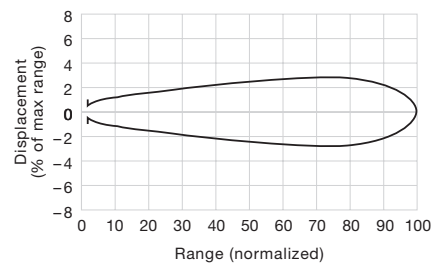
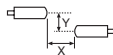
Series 101



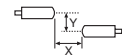
Series 100



Series 110

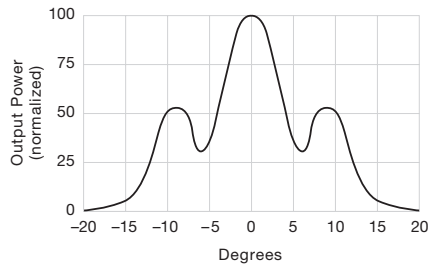


Series 120

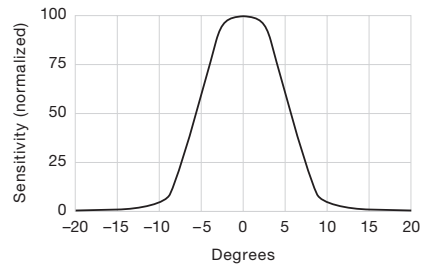


Sensing Characteristics

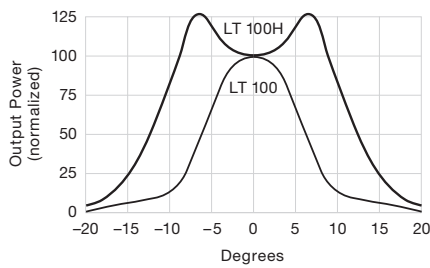
Angular Displacement (Thru-beam)



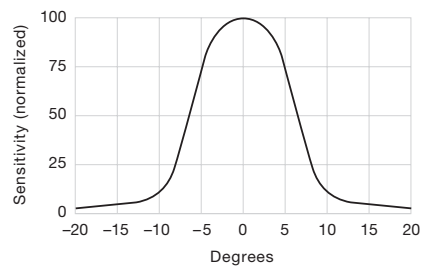
LT 101



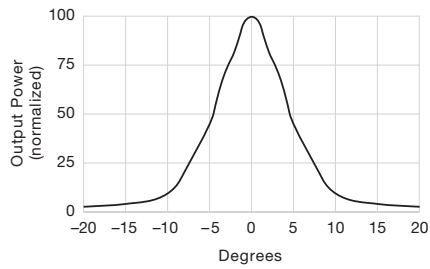
LR 101



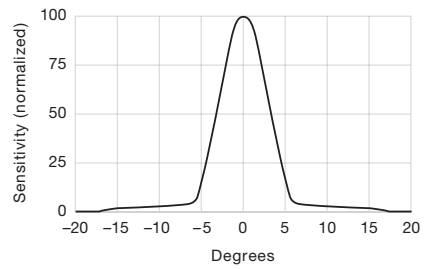
LT 100



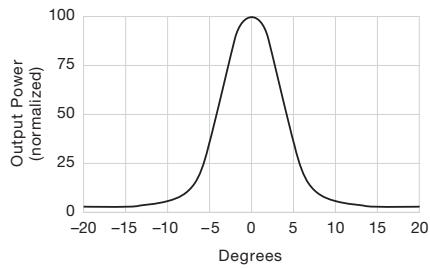
LR 100



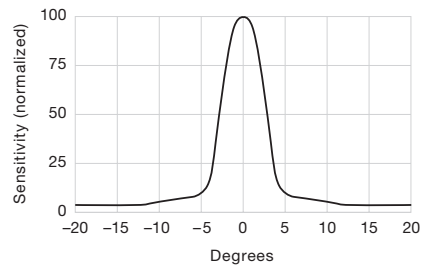
LT 110



LR 110



LT 120



LR 120

Telco reserves the right to change specifications without notice.